



SS CASE BRASS PRESSURE GAUGE

BOURDON

SGT



SPECIAL FEATURES

- STAINLESS STEEL CASE
- RUGGED CONSTRUCTION
- SUITABLE FOR PULSATING & VIBRATING APPLICATION
- DRY OR LIQUID FILLED
- STANDARD FOLLOWED IN GENERAL EN 837-1 / IS 3624

APPLICATIONS

OIL, WATER, PNEUMATICS, HYDRAULICS, PUMP, COMPRESSORS, DIESEL ENGINES

SPECIFICATIONS

STANDARD VERSION : 63 mm

Accuracy	: ±1.6% of F.S.
Ambient temperature	: - 20°C to + 60°C
Process temperature	: Max 120°C
Operating pressure	: 75 % of the Scale Value
Over pressure limit	: 30 % for Pressure Ranges upto 400 kg / cm ² 15 % for Pressure Ranges above 400 kg / cm ²

Case	: AISI 304 SS
Ring	: AISI 304 SS Crimped (Polished)
Bourdon	: Brass (Above 70 kg/cm ² Stainless Steel)
Socket	: Brass
Movement	: Brass
Joints	: Silver Alloy Brazing (-1 to 70 kg/cm ² Tin - Cooper Alloy) (100 to 1000 kg/cm ² - Silver Alloy)

Protection	: IP 55
Dial	: Aluminium, black graduation on white background
Pointer	: Aluminium, black coloured, fixed
Window	: Plexi Glass
Filling Plug	: Neoprene
Gasket	: Neoprene

GLYCERINE FILLED VERSION (OPTION PY)

Process Temperature	: + 65° C
Damping Liquids	: Glycerine 98%
Other Features	: Refer Specification of Standard Version



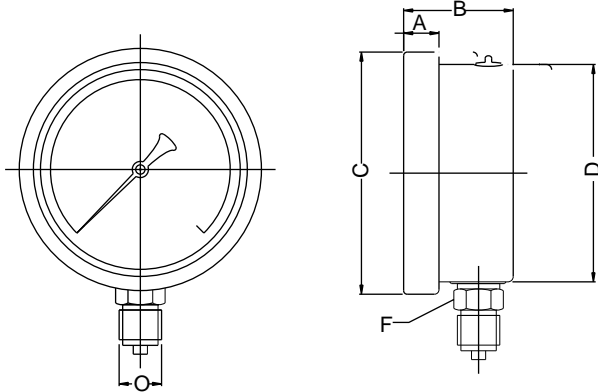
SS CASE BRASS PRESSURE GAUGE

BOURDON

DIMENSIONS - STANDARD VERSION

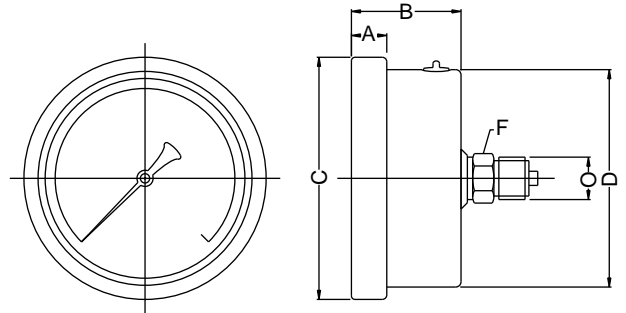


TYPE 2



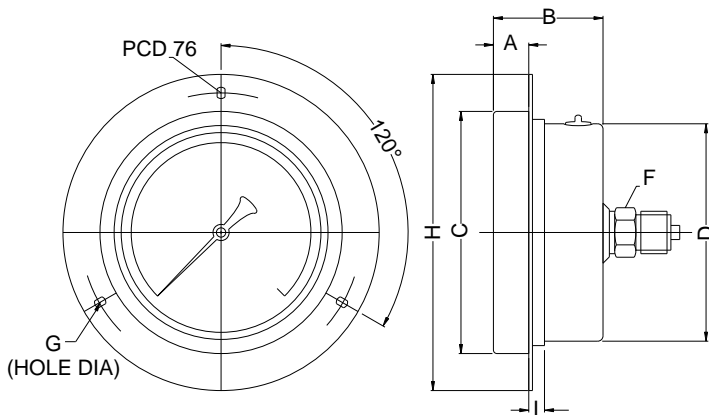
NS	A	D	F	H	I	L	U	Wt
63	10	43	10	68.5	61.5	53	14	0.13Kg

TYPE 4



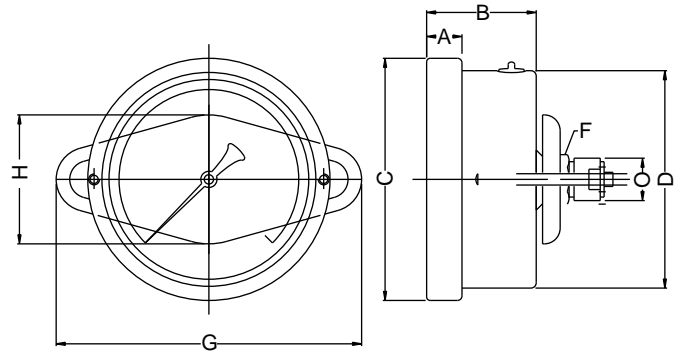
NS	A	D	H	I	N	U	Wt
63	10	43	68.5	61.5	54	14	0.13Kg

TYPE 5



NS	D	H	I	K	N	O	P	U	Wt
63	43	68.5	61.5	4	54	86	76.5	14	0.15kg

TYPE 9



NS	B	D	H	I	N	Q	U	W	Wt
63	13	43	68.5	61.5	54	68.5	14	67	0.14kg

(*WEIGHTS MENTIONED ARE FOR STANDARD VERSION.)

Notes : • Drawings are not to scale. • All Dimensions are in mm. • NS = Nominal Size.



SS CASE BRASS PRESSURE GAUGE

BOURDON



RANGE TABLE

Note : Dwyer offers National / International Scales like kPa,Mpa,bar,psi,kg/cm² & Dual Scale like kPa with psi, kPa with bar, bar with psi or Equivalent scales as per the requirement can be provided on request.

Following are the example tables for kg/cm² & psi scales

PRESSURE RANGE

SINGLE SCALE Kg / cm ²					
RANGE	RANGE	RANGE	RANGE	RANGE	RANGE
0/1	0/6	0/25	0/160	0/1000	
0/1.6	0/10	0/40	0/250		
0/2.5	0/16	0/60	0/400		
0/4	0/21	0/100	0/600		
DUAL SCALE PSI with kg/cm ²					
RANGE (IN PSI)	RANGE (kg/cm ²)	RANGE (IN PSI)	RANGE (kg/cm ²)	RANGE (IN PSI)	RANGE (kg/cm ²)
0/15	1	0/300	20	0/3000	210
0/30	2	0/400	28	0/4000	280
0/60	4	0/500	35	0/5000	350
0/100	7	0/600	42	0/6000	420
0/150	10	0/1000	70	0/10000	700
0/200	14	0/1500	100	0/15000	1000

VACUUM & COMPOUND RANGE

SINGLE SCALE kg/cm ²					
RANGE	RANGE	RANGE	RANGE	RANGE	RANGE
- 1/0	- 1/1.5	- 1/5	- 1/15		
- 1/0.6	- 1/3	- 1/9	- 1/24		
DUAL SCALE					
RANGE	RANGE	RANGE	RANGE	RANGE	RANGE
inHg with PSI	mmHg with kg/cm ²	inHg with PSI	mmHg with kg/cm ²	inHg with PSI	mmHg with kg/cm ²
- 30/0	- 760 / 0	- 30/60	- 760 / 4	- 30/200	- 760 / 14
- 30/15	- 760 / 1	- 30/100	- 760 / 7	- 30/300	- 760 / 21
- 30/30	- 760 / 2	- 30/150	- 760 / 10		

ACCESSORIES

EC	GAUGE COCK	EG	SNUBBER	EF	NEEDLE VALVE
ED	GAUGE SAVER	EH	SYPHON	Dx	DIAPHRAGM SEAL

Note : Other Scale are available on customer request Please specify



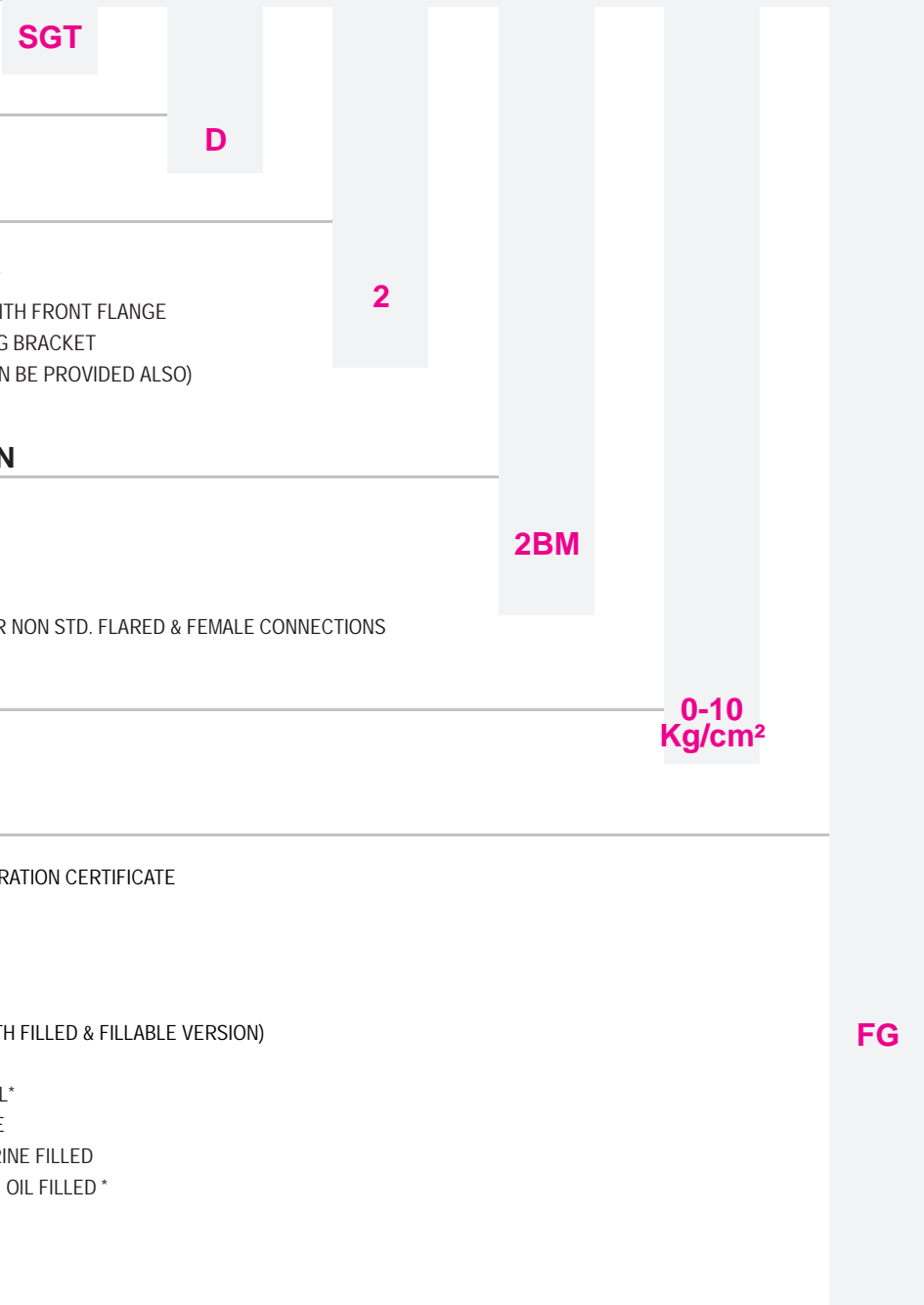
SS CASE BRASS PRESSURE GAUGE

BOURDON

SGT

HOW TO ORDER

BASIC MODEL



NOMINAL SIZE

D 63mm

TYPE OF MOUNTING

- 2 DIRECT BOTTOM ENTRY
 - 4 DIRECT CENTER BACK ENTRY
 - 5 FLUSH PANEL BACK ENTRY WITH FRONT FLANGE
 - 9 BACK ENTRY WITH MOUNTING BRACKET
- (OTHER TYPES OF MOUNTING CAN BE PROVIDED ALSO)

GAUGE CONNECTION

- 1BM 1/8" BSP (M)
- 2BM 1/4" BSP (M) STANDARD
- 1NM 1/8" NPT (M)
- 2NM 1/4" NPT (M)

ADAPTORS CAN BE PROVIDED FOR NON STD. FLARED & FEMALE CONNECTIONS

RANGE

REFER TABLES

0-10
Kg/cm²

OPTIONS

- PW FIVE POINT FACTORY CALIBRATION CERTIFICATE
- RH CUSTOM DESIGNED DIAL
- SW DIAL TAG MARKING
- SX SS TAG PLATE
- OS BAYONET RING AISI 304 SS
- SG OXYGEN SERVICE (NOT WITH FILLED & FILLABLE VERSION)
- QB DAMPENING SCREW
- FS FILLABLE LIQUID SILICON OIL*
- FG FILLABLE LIQUID GLYCERINE
- PY DAMPENING LIQUID GLYCERINE FILLED
- QA DAMPENING LIQUID SILICON OIL FILLED *

* GASKET, BOD & PLUG OF VITON

Note : Due to continuous changes the specification may vary from time to time