

# Flow indicator

## FAB



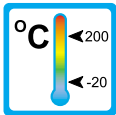
### Operation

The FAB flow indicators are impeller indicators.



### Application

The FAB flow indicators are used to indicate flow of liquid media.



The glass visualizes colour changes of the media or gas contents.



This flow indicators are for example used in following areas:



- Cooling systems
- Engineering
- Water treatment
- Medical industry
- Research and development

### Features

The FAB series proves itself through reliable function and easy handling. Further characteristics of this type are:

- Universal mounting
- Bi-directional flow
- High temperature durability
- Special threads on request

### Installation hints

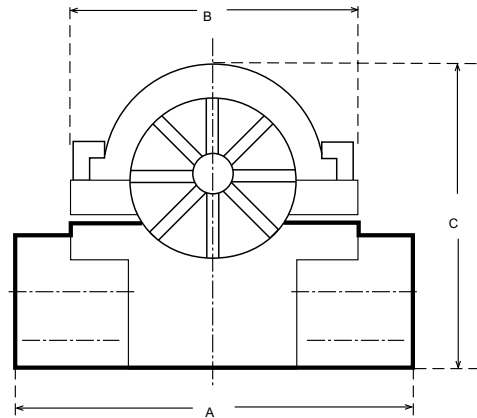
The installation of the flow indicator can be done in any way in the system. The flow direction should be observed.

The flow indicator must not be used as a supporting part in a pipe construction!

The medium must not contain any solid particles!  
We recommend the installation of strainer type SFD or SFM.



## Technical Data



### Summary of types FAB

Type	Flowrate H <sub>2</sub> O		Pressure drop (at v = 2 m/s)	DN	G	A	B	C	Weight
	min.	max.							
	[l/min]		[bar]	[mm]		[mm]	[mm]	[mm]	[kg]
FAB-8	0,7	30	0,14	8	1/4"	76	63	65	0,68
FAB-10	0,8	40	0,16	10	3/8"	76	63	65	0,65
FAB-15	1,0	55	0,22	15	1/2"	76	63	65	0,62
FAB-20	1,2	90	0,19	20	3/4"	89	63	83	1,25
FAB-25	1,5	140	0,50	25	1"	89	63	83	1,20

NPT-threads on request

Operating data	FAB	
Operating pressure max.:	PN 16 bar	
Operating temperature max.:	200 °C	
Pressure drop:	see summary of types	
Material	Bronze-version	Stainless steel-version
Body:	Bronze (LG2)	Stainless steel 1.4408
Clampring:	Bronze	Stainless steel
Spinner:	Plastic PPS yellow	
Sight glass:	Borosilikat	
O-ring:	Viton®	
Gaskets:	Klingersil® (C-4400)	
Screws:	Stainless steel	

FAB 2 0001 04-06 E.M

